

Barn Dance

Image 1

It's moving time. It's been some time since we planned for expansion by securing a listed barn in Petersfield for conversion but the now imminent move has come at just the right time.

In common with many colleagues across the construction industry this season sees us with an expanding workload as part of the general economic growth in the UK. With continued growth forecast we plan to meet the demands of the industry whilst maintaining our unique approach.

As we go to print, the finishing touches are being put to the new studio. Deciding that it would be good for our wellbeing and the environment to relocate nearer to where the majority of us live led to the renovation and extension of Buckmore Farm Barn in Petersfield. Now called Buckmore Studios, it has the benefit of a semi-rural location on the edge of Petersfield whilst being ideally placed 2 minutes from the A3 and less than 10 minutes from a well-connected railway station.

We'll be very accessible with ample parking and yet have a great working environment including external meeting areas, shower facilities and three conference rooms (the largest seats at least 20) alongside a 38 seat studio. The new facilities have a low environmental impact and will greatly improve the workplace for our whole team whilst allowing for planned growth – we're already at our largest number of team members and have outgrown our current workspace.

We're staying open plan but we've dispensed with a reception and

instead chosen to welcome visitors to a modern 'canteen' with internet access and coffee on tap, so do come and see us; you don't need an appointment. The big move is planned for mid-October and our new contact details are at the end of this newsletter.

Welcome to Bulmershe

Image 2

Re-Format designed a new gateway building and independent Student Support Centre at The Bulmershe School, Woodley. The two new buildings are the first phase of the wider masterplan that will lead to the regeneration of the school campus. Creating a dynamic new reception entrance, the building adds a new 6th form centre, school hall and teaching block to the school's existing accommodation.



Down in the Meadow

Image 3

Planning consent was granted for 5 contemporary dwellings in Long Sutton, Hampshire. Situated in a historic field in the centre of the village, the main parameter was to design a low impact and intimate solution. This was achieved by carving into the landscape so that the ground floors are set into the field and occupy sunken terraces.

RE-
FOR



Second Step

Image 5

We have submitted planning for 4 contemporary dwellings on a second steeply sloping site in Winchester. The design deals with a 20m slope, with the dwellings cutting into the existing bank to create a dynamic stepped development proposal.

Happening in Hampshire

Image 4

We are delighted to continue our 20 year relationship with Hampshire County Council, currently delivering 4 new school projects in conjunction with MACE, Interserve and Balfour Beatty. Greenfields School, Hartley Wintney; Tower Hill School, Farnborough; Oakwood School, Hartley Wintney; and Nursling School, Southampton, are well underway, the first schools shortly to commence on site.

MAT



Walk This Way

Image 7

Re-Format put together 2 teams of 4 to take part in the Oxfam Trailwalker charity event which took place on 25th and 26th July. This involved walking 100km in under 30 hours across the South Downs from Petersfield to Brighton. The team completed the walk in 27 hours, 24 minutes raising £3,000 for Oxfam and the Gurkha Welfare Trust.

Ace Milan

Image 6

Our annual study trip was to the vibrant city of Milan in northern Italy. Guided by local architect and university lecturer Carlo Berizzi, we were offered a great insight into many of the city's fine examples of contemporary architecture. We visited residential developments by Aldo Rossi and Zaha Hadid, the highly experimental 'Vertical Forest' by Stefano Boeri, Bocconi University by Grafton Architects, and Fondazione Prada's new venue conceived by OMA, which impressed with its striking gold façade.

News Flash

- Commissioned for a mixed use office and 300 bed student accommodation project
- Bid success for a new visitor centre in The Chilterns for the Forestry Commission
- Portsmouth secondary school review programme underway
- Bourne Mill care home scheme is progressing to technical design



Trust Us

Image 8

Re-Format has worked closely with Hampshire County Council and Winchester City Council to design the brand for the newly established Hampshire Cultural Trust. We designed a complete set of brand guidelines covering everything from logo use, colour pallet and fonts, to its application on signage, stationery, uniforms and merchandise. The Trust funds and operates the council-owned arts and museum venues across Hampshire with a view to being the 'champion of world-class culture in the county'. All venues supported by the Trust will carry the new brand in their signage and volunteer uniforms.



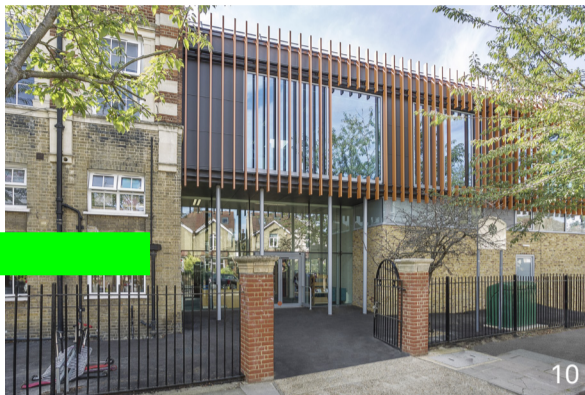
Site Visit

Image 9

We have recently launched our newly refreshed website which has been designed and developed in-house by our team of graphic designers. The site makes the most of all screen sizes by offering a fully responsive user experience. Visit us at www.re-format.co.uk

Cover Image – Darell Primary School
100% Recycled Paper

RE- FOR



Edwardian Expansion

Image 10

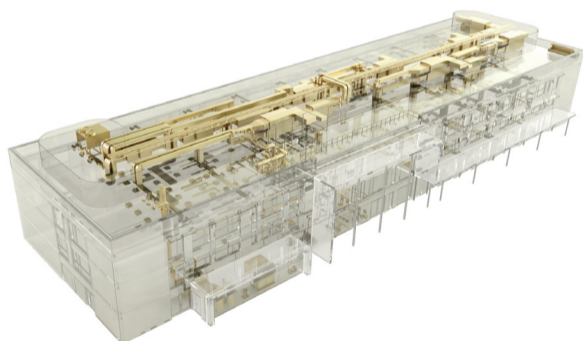
Our clever expansion of Darell Primary School for the London Borough of Richmond upon Thames has been completed in time for the new school year. The main challenge faced on this constrained urban site was to create all the required new accommodation without enlarging the existing school footprint. A new first floor 'glass box' studio and library sit above the main entrance facing the street. The extension is book-ended by the original Edwardian school and is softened by terracotta fins to compliment the original brickwork.

12

Bridge to Improvement

Image 11

Re-Format has won planning permission for the transformation of Bridge House in Farnham. The tired 60s office building will be transformed into 14 stone and bronze clad luxury riverside apartments for developer Hedge Hunter Farnham.



BIM Benefits

Image 12

We have submitted a detailed planning application for a new £12m building at Elthorne Park High School in Ealing. The proposal is for a 3 storey teaching block including a new hall, learning resource centre and ARP facility. The challenging programme was achieved using the latest BIM (Building Information Management) software and from the outset the mechanical and electrical services and the structural system were fully integrated into a 3D CAD model to facilitate off-site manufacture.

Improving Slough Schools

Image 14

Re-Format has submitted planning applications for 3 existing primary schools in Slough.

Responding to an expansion in pupil numbers, Claycots Primary School, St Mary's CE Primary School and James Elliman Academy will benefit from new and additional classrooms and an increase in support and resource accommodation through new build extensions, modifications to existing teaching facilities and external works. The result will be overall significant improvement in the teaching and learning environment. Construction commences in March 2016.

Cotswold Stone

Image 13

We have won planning consent for 34 later living apartments in the Cotswold town of Cirencester for McCarthy & Stone. The scheme uses Cotswold stone, which makes up much of the market town, but in a crafted and restrained design. The project is due to start on site shortly.



MAT

Re-Format Review Autumn 2015

Architecture

Project Management
Masterplanning
Planning Services
3D Visualisation

www.re-format.co.uk

Phone: 01730 778778 (from 19.10.15)
Email: mail@re-format.co.uk
Twitter: @re_format

For all initial enquiries please ask for our Studio Manager, Janice Hayes

Graphic Design

Visual Identity
Print Design
Digital Design

Re-Format LLP (from 19.10.15)

Buckmore Studios
Beckham Lane
Petersfield
Hampshire
GU32 3BU